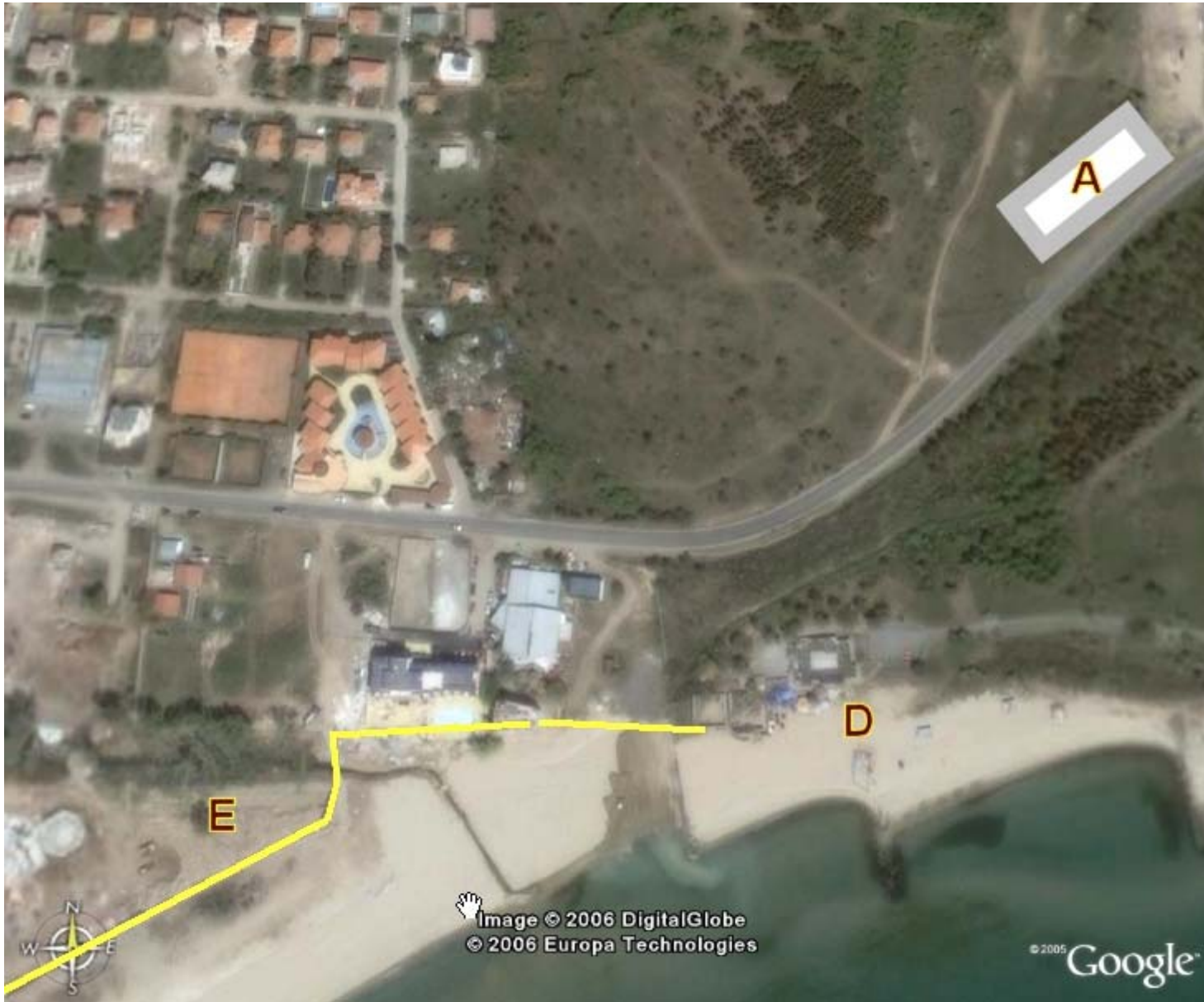


## Plan 2



Cross the sands from the beach bar (D) towards the large hotels (some construction work here).

At the Helena (E) is the start of a grand promenade of Florida style hotels (Majestic, Victoria).

As the promenade continues further south you come to Sunny Beach proper, a typical lively beach resort with many shops, bars and restaurants.

For eating look out for the Condor on the right and Filipopol on the left, literally on the beach.